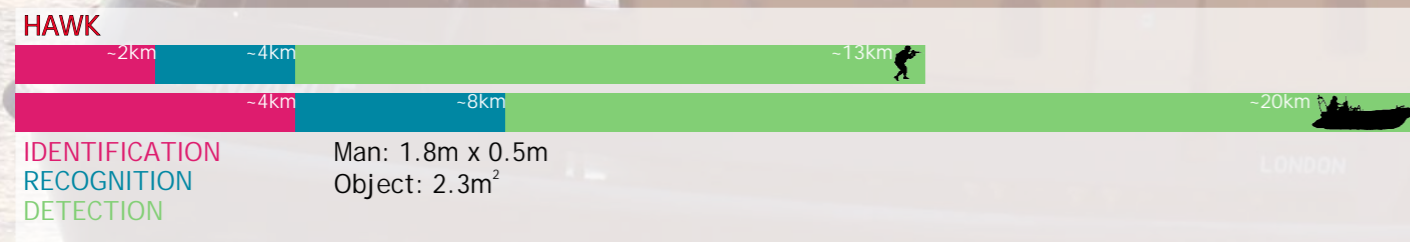
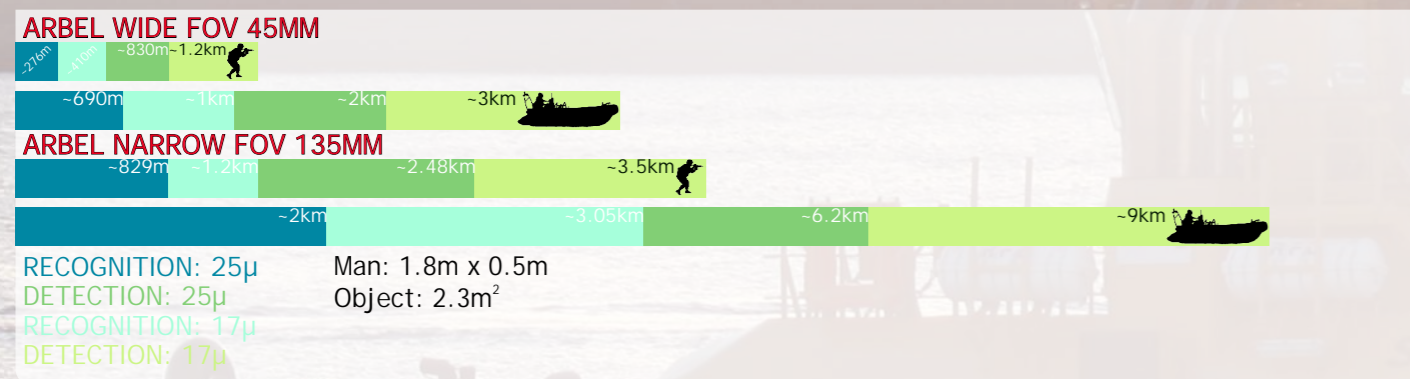
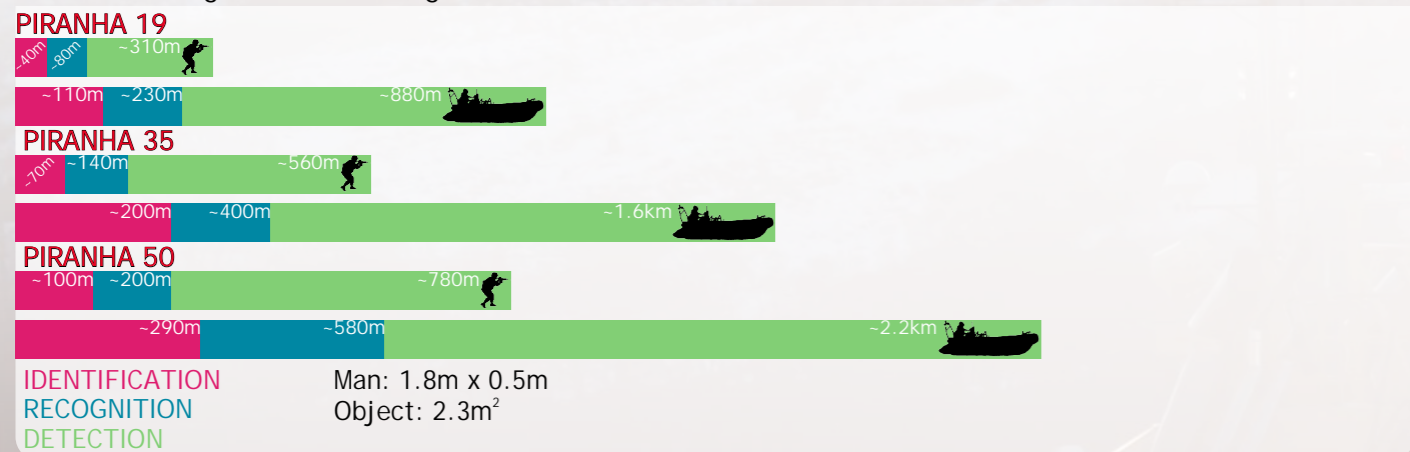


## Pan & Tilt Technical Specifications

Viper			Cobra			Python		
<b>Payload Mass</b>	10Kg		<b>Payload Mass</b>	Max 25Kg (15Kg single side)		<b>Payload Mass</b>	15Kg	
<b>Azimuth</b>	Rotation	Continuous N x 360°	<b>Azimuth</b>	Rotation	Continuous N x 360°	<b>Azimuth</b>	Rotation	Continuous N x 360°
	Slewing Speed	Max 30°/s		Slewing Speed	Min 0.055°/s Max 42°/s		Slewing Speed	Min 0.055°/s Max 42°/s
	Pointing Accuracy	0.25°		Pointing Accuracy	0.07°		Pointing Accuracy	0.07°
<b>Elevation</b>	Rotation	+/-90°	<b>Elevation</b>	Rotation	±65° (Mechanical)	<b>Elevation</b>	Rotation	+85° -45° (Mechanical)
	Slewing Speed	Max 30°/s		Slewing Speed	Min 0.02°/s Max 48°/s		Slewing Speed	Min 0.05°/sec Max 35°/sec
	Pointing Accuracy	0.25°		Pointing Accuracy	0.07°		Pointing Accuracy	0.07°

## Thermal Image Camera Range Tables



Chess Dynamics Ltd  
 Quadrant House  
 North Heath Industrial Park  
 North Heath Lane  
 Horsham  
 West Sussex  
 RH12 1XE  
 UK

Tel: +44 (0) 1403 249 888  
 Fax: +44 (0) 1403 249 555

www.Chess-Dynamics.com



**Viper** [Land & vehicle pan & tilt shown with integrated TV camera, thermal imager and optional Laser Range Finder & Target Designator]



**Python** [marine Pan & Tilt shown with optional gyro-stabilisation and multi-sensor pack for all Coastal and Maritime Applications]



**Cobra** [marine Pan & Tilt with optional gyro-stabilisation, integrated TV camera and thermal imager for all Coastal and Maritime Applications]

# CS<sup>3</sup> Systems

### Applications:

- **Navigation In Total Darkness**  
Clearly see other shipping traffic, channel markers, exposed landforms or floating debris
- **Day Time Navigation**  
See through the glare of sunrise or sunset to avoid possible obstacles
- **Short/Long Range Threat Detection**  
See approaching vessels at sea or in port without alerting the target
- **Improved Onboard Security & Safety**  
Provide protection of assets onboard, the fleet itself or passengers and crew
- **Man Overboard Searches**  
Quickly identify and locate endangered persons, and provide immediate assistance
- **Anti-Piracy/Asset Protection**  
Identify radar "blips" on the horizon in realtime to assess possible dangers before its too late

### Configurable Security Surveillance Systems (CS<sup>3</sup>) can be fully integrated with sensors for:

- **Land**  
Flexible and economical fixed and portable surveillance solutions
- **Maritime**  
Full gyro-stabilised installations for commercial ships, oilrig, and port patrol vessels
- **Vehicles**  
Rugged long lasting performance for situational awareness and surveillance



Pan & Tilt Mount



Daylight Camera



Thermal Imager



Laser Range Finder



Control Unit & Monitors



Viper



Python



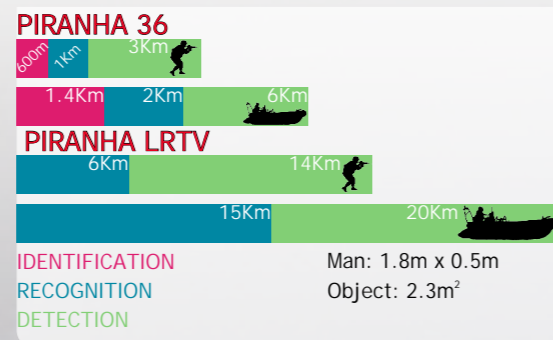
Cobra



Piranha 36



Piranha LRTV



	Zoom	HFOV	Sensitivity
Piranha 36	36x	57.8° to 1.7°	1.00 lux @ 30 IRE 0.1 lux Night Mode
Piranha LRTV	140x	0.22° to 25°	0.3 lux



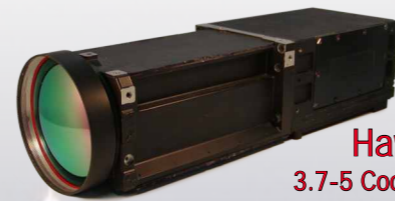
Piranha 50

Piranha 35

Piranha 19



Arbel  
8-14 Uncooled



Hawk  
3.7-5 Cooled

	Format	Wavelength	FOV
Piranha 19			36° x 27°
Piranha 35	384 x 288	7.5 - 13.5 μm	20° x 15°
Piranha 50			14° x 11°
Arbel	640 x 480	8 - 14 μm	Wide: 14.3° x 10.725° Narrow: 4.6° x 3.45°
Hawk	640 x 512	3.7 - 5 μm	Wide: 24° x 19.2° Narrow: 1.8° x 1.44°

- High performance, low cost thermal imagers to meet every requirement
- Optional wiper integration
- Simple mounting interface to allow fast & easy serviceability
- Auto focus & high sensitivity
- Optical zoom options upto 13.3x

(Full range table details on back page)

LP16



LP17



CELT-2



	Laser Type	Range	Measuring Rate
Zeiss LP16	1.54 μm*	80 - 20,000m	Fast: 1 measurement/sec for 6 pulses Standard: 1 measurement/6 sec
Zeiss LP17	1.54 μm*	100 - 20,000m	2Hz
CELT-2	1.54 μm*	100 - 19,995m	1Hz

\*Eye safety: Class 1 (IEC 60825-1)

- Compact, lightweight and high performance
- Eye safe Class 1 (IEC 60825-1)
- Ideally suited for outdoor environments without loss of performance



HCU  
Hand Control Unit



DCC  
Desktop Control Console



OCC  
Operator Control Console

	Screen	Control	Data
HCU	5.4" Colour LCD	Twin Mini Joysticks 10 Function Buttons	RS422
DCC	Range Available	Joystick & Configurable Function Buttons	RS422
OCC	17" Button Operated Colour LCD	Ruggedised Joystick & Integrated Keyboard/Mouse	RS422

- Range of control I/Fs to suit any application
- Concise & easy to use button layout
- Ergonomically designed for comfortable use over long periods of time
- Provides full control of sensor platform with real-time visual feedback
- User configurable

- Robust design & build
- Fast & precise pointing accuracy
- Easy to install mounting fixture
- Modular payload brackets (sensor change in <10mins)
- Lightweight
- Optional gyro-stabilisation available for Python & Cobra platforms for steady imagery

(See back page for technical specifications)